

1

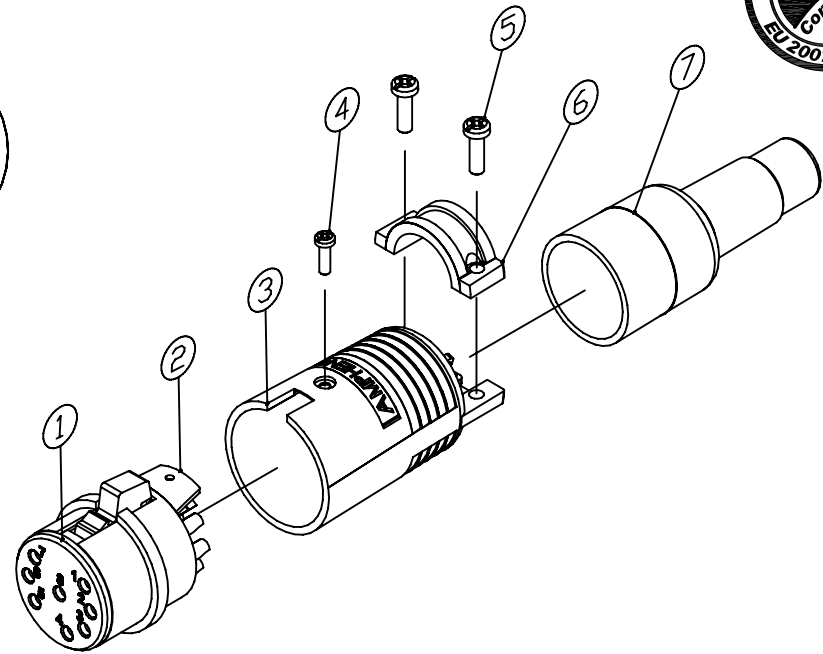
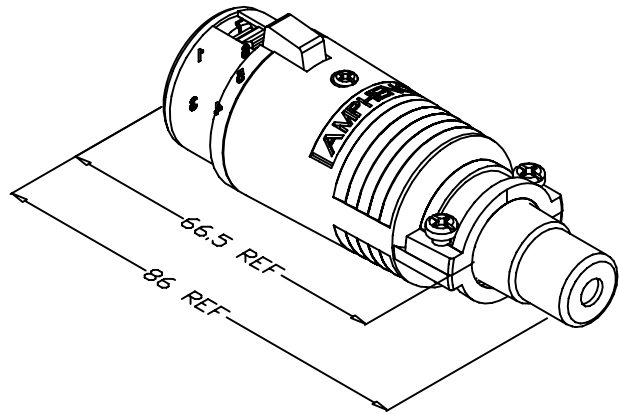
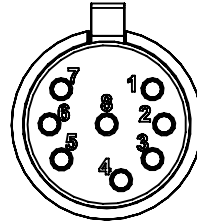
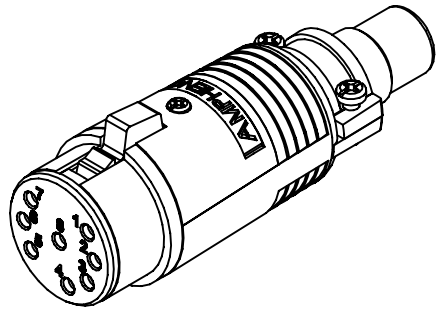
2

3

4

5

6



NOTE: 1. FOR EXAMPLE: FOR AN EP-8-11P USE ASSY No. 128199-0008

EP-*--11P TYPE	EP/AP INSERT P/N
EP - 3 - 11P	156-4401-003
EP - 4 - 11P	156-4401-004
EP - 5 - 11P	156-4401-005
EP - 6 - 11P	156-4401-006
EP - 8 - 11P	156-4401-008

ITEM	PART No.	DWG No.	DESCRIPTION	QTY
7	012-4026-00*	012-4026-00*	EP BUSHING	1
6	026-4016-000	026-4016-000	EP 11 & 12 CLAMP	1
5	990-4094-000	990-4094-000	CABLE CLAMP SCREW FOR EP	2
4	990-4400-000	990-4400-000	2-32 PAN HEAD SCREW	1
3	248-4108-000	248-4108-000	EP 11 SHELL, LONG VERSION	1
2	011-4400-000	011-4400-000	EP BARREL	1
1	SEE TABLE	SEE TABLE	EP SOCKET INSULATOR ASSY	1

UNLESS OTHERWISE SPECIFIED TOLERANCE TO BE

LINEAR	ANGULAR
X ± 0.5	X' ± 1°
X.X ± 0.1	X'X' ± 30'
X.XX ± 0.05	X'X'X' ± 15'

BREAK ALL SHARP EDGES AND REMOVE ALL BURRS

DO NOT SCALE

DIMENSIONS IN MILLIMETRES

THIS DOCUMENT IS THE PROPERTY OF AMPHENOL AUSTRALIA PTY. LTD.. NO PART THEREOF MAY BE REPRODUCED AND USED WITHOUT THE PRIOR WRITTEN CONSENT OF THE OWNER

CAD FILE: 00805102

MATL: REFER TO COMPONENT

FINISH: REFER TO COMPONENT

THIRD ANGLE PROJECTION

SCALE: 2:1 UOS

2	OMIT PART NUMBER EP - 2 - 11P PRODUCT OBSOLETE	M.N.H.	19-11-08	8784
1	UPDATE TO AMPHENOL TITLE BLOCK & LOGO REDRAW & ADD BOM	M.N.H.	12-04-01	7783
0	FIRST ISSUE	S.M.D	07-02-90	----
REV.	CHANGE DETAILS	BY	DATE	CHG/No

TITLE: EP-*--11P CUSTOMER DRAWING

Amphenol Australia Pty Ltd, 2 Fireweys Blvd, Keysborough, Vic3173

DRAWING NO. 128199-000* SHEET 1 OF 1

1

2

3

4

5

6

1

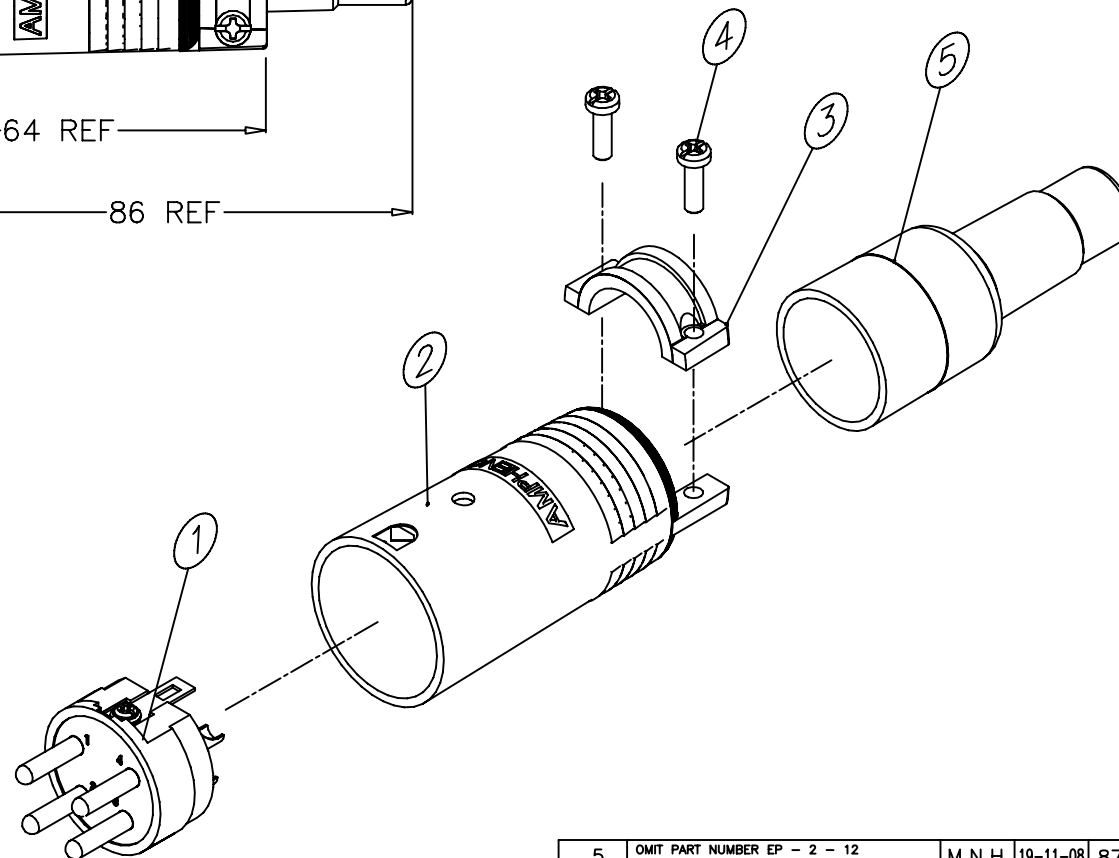
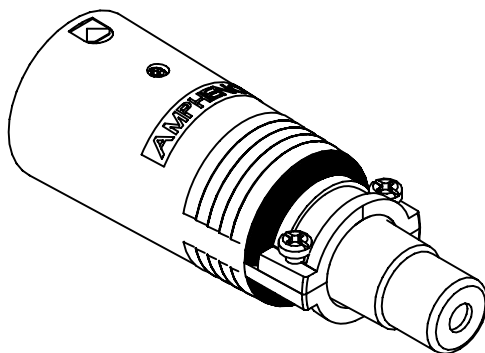
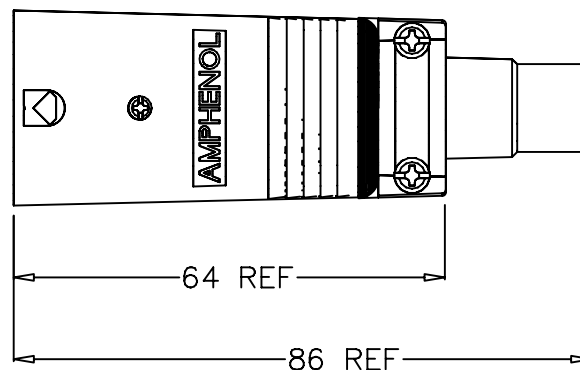
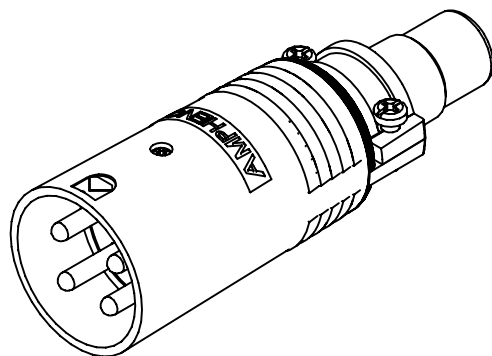
2

3

4

5

6



EP-* - 12 TYPE	EP/AP INSERT P/N
EP - 3 - 12	156-4402-003
EP - 4 - 12	156-4402-004
EP - 5 - 12	156-4402-005
EP - 6 - 12	156-4402-006
EP - 8 - 12	156-4402-008

NOTE: 1. FOR EXAMPLE: FOR AN EP-4-12 USE ASSY No. 128036-0004

ITEM	PART No.	DWG No.	DESCRIPTION	QTY	DIMENSIONS IN MILLIMETRES	UNLESS OTHERWISE SPECIFIED TOLERANCE TO BE	THIS DOCUMENT IS THE PROPERTY OF AMPHENOL AUSTRALIA PTY. LTD. NO PART THEREOF MAY BE REPRODUCED AND USED WITHOUT THE PRIOR WRITTEN CONSENT OF THE OWNER	DRN:	DATE:	TITLE:	Amphenol	DRAWING NO.	SHEET
5	012-4026-00*	012-4026-00*	EP BUSHING	1		LINEAR: X ± 0.50, X.X ± 0.25, X.XX ± 0.10	THIS DOCUMENT IS THE PROPERTY OF AMPHENOL AUSTRALIA PTY. LTD. NO PART THEREOF MAY BE REPRODUCED AND USED WITHOUT THE PRIOR WRITTEN CONSENT OF THE OWNER	J.R.H.	02-09-88	EP-* - 12 CUSTOMER DRAWING	Amphenol Australia Pty Ltd, 2 Fireways Blvd, Keysborough, Vic 3173	126036-000*	1 OF 1
4	990-4094-000	990-4094-000	CABLE CLAMP SCREW FOR EP	2		ANGULAR: X' ± 1°, X'X' ± 30°, X'X'X' ± 15°		M.H.	19-11-08				
3	026-4016-000	026-4016-000	EP 11 & 12 CLAMP	1				P.M.	19-11-08				
2	248-4109-00*	248-4109-00*	EP 12 SHELL, LONG VERSION	1									
1	SEE TABLE	SEE TABLE	EP/AP PIN INSULATOR ASSEMBLY	1									
					DO NOT SCALE		FINISH: REFER TO COMPONENT		SCALE: 2:1 UOS		PART No: SEE TABLE		SIZE: A3

5	OMIT PART NUMBER EP - 2 - 12 PRODUCT OBSOLETE	M.N.H.	19-11-08	8784
4	UPDATE TO AMPHENOL TITLE BLOCK & LOGO REDRAW, ADD BOM & 3D VIEWS	M.N.H.	18-04-01	7785
3	REFER TO CHANGE NOTE 6253	R.D.	14-09-95	6253
2	REFER TO CHANGE NOTE 5662	A.W.	08-12-92	5662
0	FIRST ISSUE	J.R.H.	02-09-88	----
REV.	CHANGE DETAILS	BY	DATE	CHG/No

1

2

3

4

5

6

1

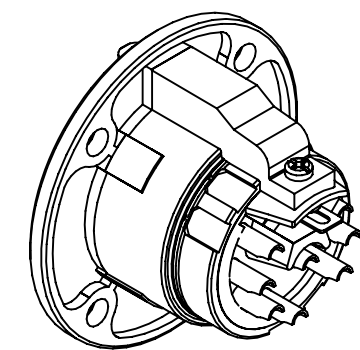
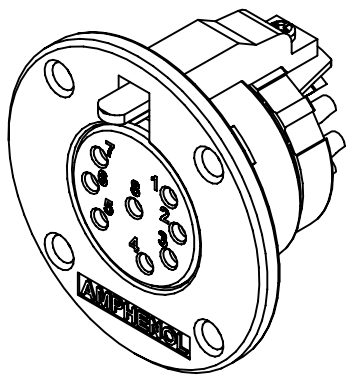
2

3

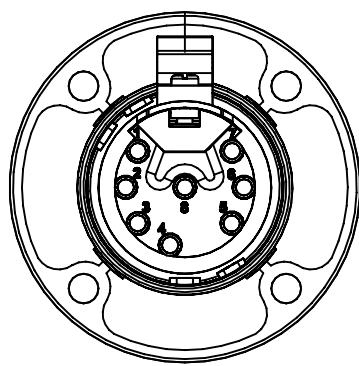
4

5

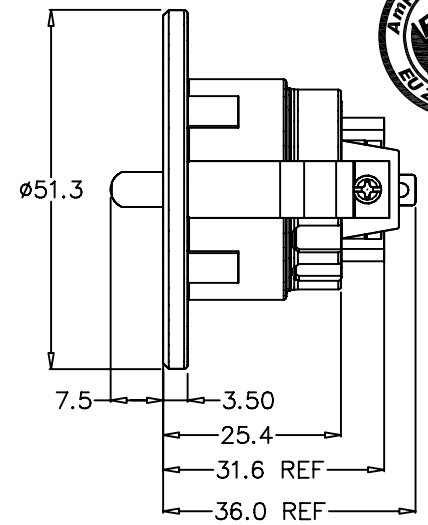
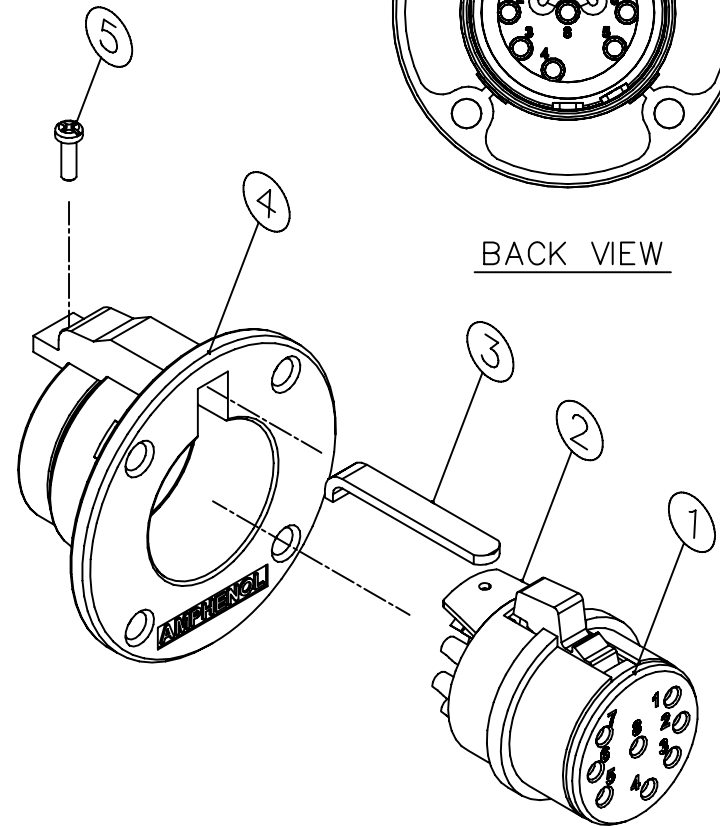
6



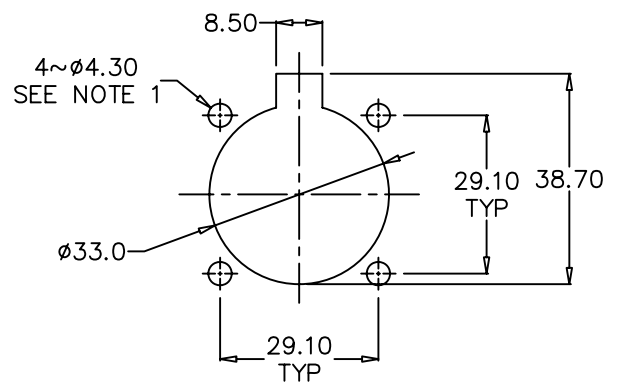
ISO VIEW



BACK VIEW



TOP VIEW



PANEL CUT OUT



EP-* - 13P TYPE	EP/AP INSERT P/N
EP - 3 - 13P	156-4401-003
EP - 4 - 13P	156-4401-004
EP - 5 - 13P	156-4401-005
EP - 6 - 13P	156-4401-006
EP - 8 - 13P	156-4401-008

NOTE: 1. THE DIAMETER OF THE 4 MOUNTING HOLES ON THE PANEL CUT OUT DEPENDS ON THE SIZE OF THE SCREW TO BE USED
 2. FOR EXAMPLE: FOR AN EP-8-13P USE ASSY No. 128201-0008

ITEM	PART No.	DWG No.	DESCRIPTION	QTY
5	990-4400-000	990-4400-000	2-32 PAN HEAD SCREW, LONG	1
4	248-4100-0**	248-4100-0**	DIE CAST SHELL	1
3	208-4001-000	208-4001-000	EP/AP LATCH LEVER	1
2	011-4400-000	011-4400-000	EP/AP BARREL	1
1	SEE TABLE	SEE TABLE	EP SOCKET INSULATOR ASSY	1

UNLESS OTHERWISE SPECIFIED TOLERANCE TO BE

LINEAR	ANGULAR
X ± 1.00	X' ± 1°
X.X ± 0.50	X'X' ± 30'
X.XX ± 0.20	X'X'X' ± 15'

BREAK ALL SHARP EDGES AND REMOVE ALL BURRS
 DO NOT SCALE
 FINISH: REFER TO COMPONENT

CAD FILE: 00804104 DRN: S.M.D DATE: 07-02-90
 MATL: REFER TO COMPONENT CKD: M.H DATE: 19-11-08
 APP'D: P.M DATE: 19-11-08

THIS DOCUMENT IS THE PROPERTY OF AMPHENOL AUSTRALIA PTY. LTD. NO PART THEREOF MAY BE REPRODUCED AND USED WITHOUT THE PRIOR WRITTEN CONSENT OF THE OWNER

THIRD ANGLE PROJECTION
 SCALE: 2:1 UOS
 PART No: SEE TABLE

4	OMIT PART NUMBER EP - 2 - 13P PRODUCT OBSOLETE	M.N.H	19-11-08	8784
3	UPDATE TO AMPHENOL TITLE BLOCK & LOGO REDRAW, ADD BOM & PANEL CUT OUT DETAILS	M.N.H.	12-04-01	7782
1	FIRST ISSUE	S.M.D	07-02-90	----
REV.	CHANGE DETAILS	BY	DATE	CHG/No

TITLE: EP-* - 13P CUSTOMER DRAWING

Amphenol
 Amphenol Australia Pty.Ltd, 2 Fireweys Blvd, Keysborough, Vic3173

DRAWING NO. 128201-000* SHEET 1 OF 1

SIZE: A3

1

2

3

4

5

6

1

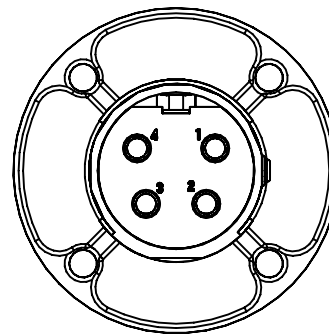
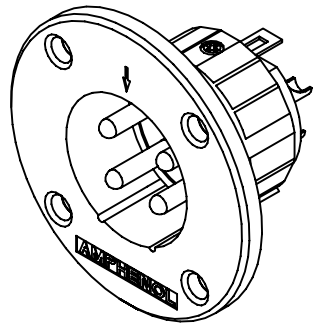
2

3

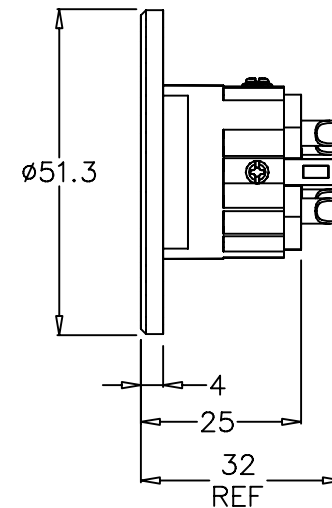
4

5

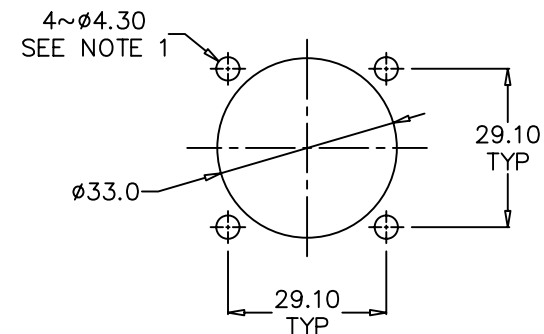
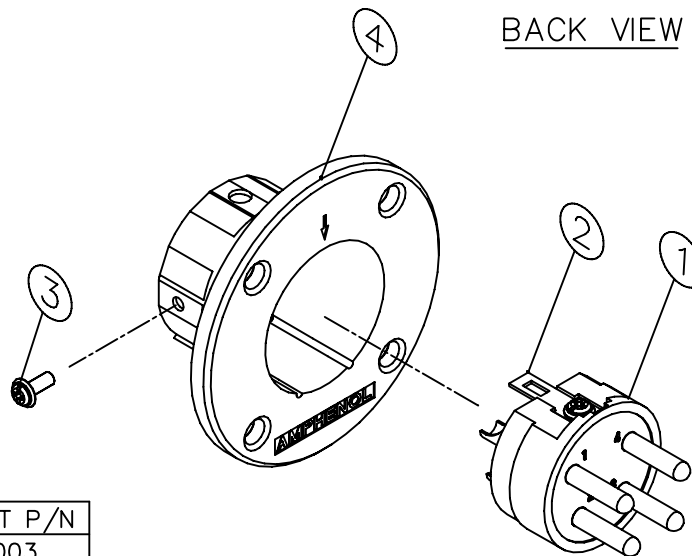
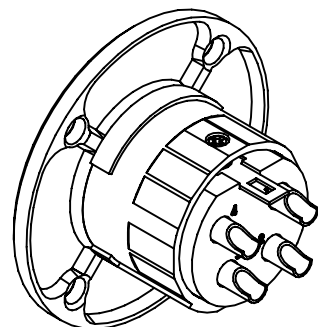
6



BACK VIEW



TOP VIEW



PANEL CUT OUT

EP-* - 14 TYPE	EP/AP INSERT P/N
EP - 3 - 14	156-4402-003
EP - 4 - 14	156-4402-004
EP - 5 - 14	156-4402-005
EP - 6 - 14	156-4402-006
EP - 8 - 14	156-4402-008

NOTE: 1. THE DIAMETER OF THE 4 MOUNTING HOLES ON THE PANEL CUT OUT DEPENDS ON THE SIZE OF THE SCREW TO BE USED
2. FOR EXAMPLE: FOR AN EP-4-14 USE ASSY No. 128037-0004

2	OMIT PART NUMBER EP - 2 - 14 PRODUCT OBSOLETE	M.N.H.	19-11-08	8784
1	UPDATE TO AMPHENOL TITLE BLOCK & LOGO REDRAW, ADD BOM & PANEL CUT OUT	M.N.H.	12-04-01	7784
0	FIRST ISSUE	D.v.E.	15-04-94	----
REV.	CHANGE DETAILS	BY	DATE	CHG/No

ITEM	PART No.	DWG No.	DESCRIPTION	QTY	UNLESS OTHERWISE SPECIFIED TOLERANCE TO BE	THIS DOCUMENT IS THE PROPERTY OF AMPHENOL AUSTRALIA PTY. LTD. NO PART THEREOF MAY BE REPRODUCED AND USED WITHOUT THE PRIOR WRITTEN CONSENT OF THE OWNER				TITLE:	Amphenol	
4	248-4099-0**	248-4099-0**	EP-* - 14 SHELL	1	LINEAR: X ± 0.50 X.X ± 0.25 X.XX ± 0.10	ANGULAR: X' ± 1° X'X' ± 30' X'X'X' ± 15'	CAD FILE: 00806102	DRN: C.J.W.	DATE: 15-04-94	EP-* - 14 CUSTOMER DRAWING	Amphenol Australia Pty Ltd, 2 Fireweys Blvd, Keysborough, Vic3173	
3	990-4500-000	990-4500-000	2-32 PAN WASHER FACE SCREW	2	BREAK ALL SHARP EDGES AND REMOVE ALL BURRS		MATL: REFER TO COMPONENT	CKD: M.H.	DATE: 19-11-08	DRAWING NO.	SHEET	
2	357-4400-000	357-4400-000	EP RETAINER	1	DO NOT SCALE		FINISH: REFER TO COMPONENT	APP'D: P.M.	DATE: 19-11-08	SCALE: 2:1 UOS	PART No: SEE TABLE	
1	SEE TABLE	SEE TABLE	EP/AP PIN INSULATOR ASSEMBLY	1	DIMENSIONS IN MILLIMETRES		THIRD ANGLE PROJECTION	SCALE: 2:1 UOS		PART No: SEE TABLE		SIZE: A3
											126037-000*	1 OF 1

1

2

3

4

5

6